

**Central Leprosy Division
Directorate General of Health Services
Nirman Bhawan, New Delhi – 110011**

NLEP – Progress Report for the year 2013-14

EPIDEMIOLOGICAL STATUS

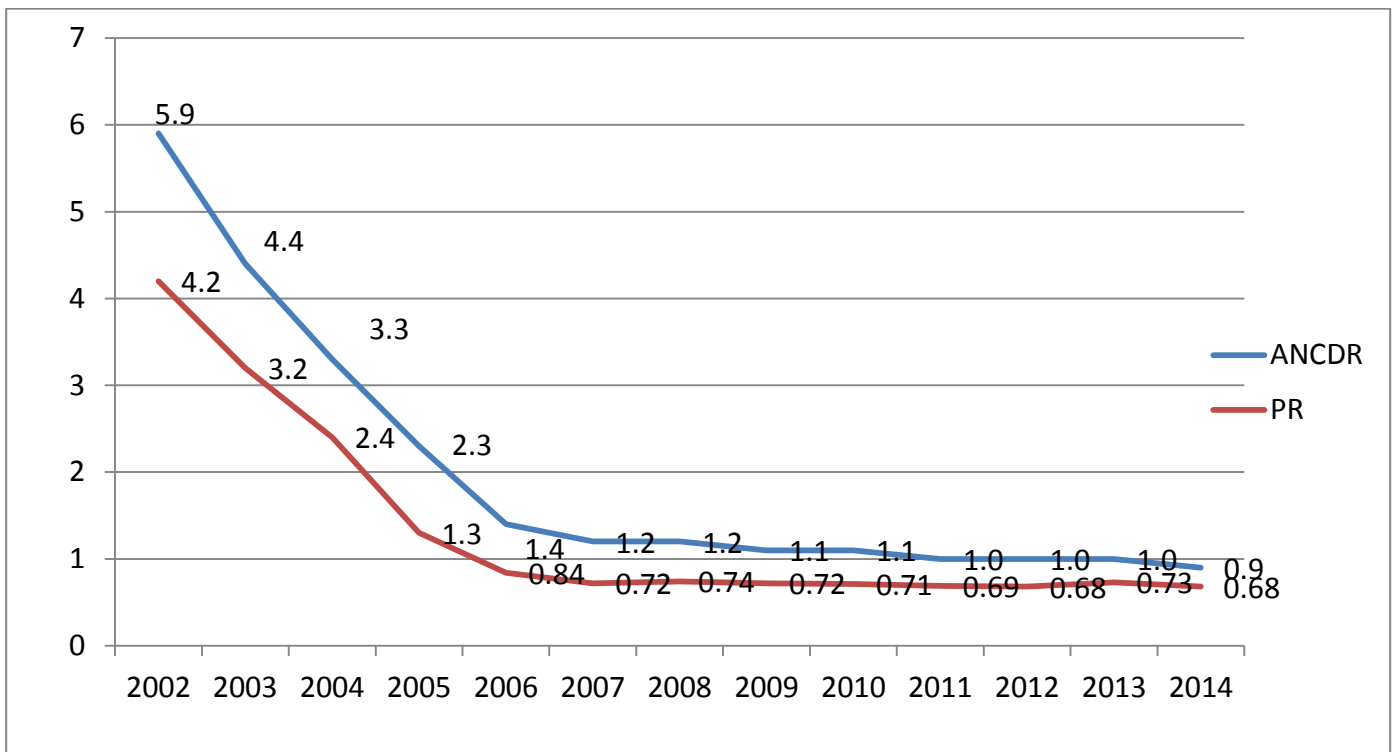
Status in the Country

The year 2013-14 started with 0.92 lakh leprosy cases on record as on 1st April 2013, with PR 0.73/10,000. Till then 33 States/ UTs had attained the level of leprosy elimination. 528 districts (81.4%) out of total 649 districts also achieved elimination by March 2013.

A total of 209 high endemic districts were identified for special actions during 2012-13. After thorough analysis 1792 blocks & 150 urban areas were identified for special activity. During the year 2013-14 also, Special activities with house to house survey was the main strategy alongwith IEC and capacity building of the workers and volunteers. These activities were carried out in the high endemic blocks of low endemic districts alongwith the left out blocks of high endemic districts in the previous year (2012-13).

Based on the reports received from all the States and UTs for the year of 2013-14 (Annexure –I), current leprosy situation in the country is as below:

1. A total of 1.27 lakh new cases were detected during the year 2013-14, which gives Annual New Case Detection Rate (ANCDR) of 9.98 per 100,000 population. This shows decrease in ANCDR by 7.4% from 2012-13 (10.78).
2. A total of 0.86 lakh cases are on record as on 1st April 2014, giving a Prevalence rate (PR) of 0.68 per 10,000 population. This shows decrease in PR by 12.8% from 2012-13 (0.78).
3. Detailed information on new leprosy cases detected during 2013-14 indicates the proportion of MB (51.48%), Female (36.91%), Child (9.49%), Grade II Deformity (4.14%), ST cases (17.88%) and SC cases (18.03%).
4. A total of 5256 Gr. II disability detected amongst the New Leprosy Cases during 2013-14, indicating the Gr. II Disability Rate of 4.13 / million population (Annexure-II).
5. A total of 12043 child cases were recorded, indicating the Child Case rate of 0.95/100,000 population (Annexure-II). This shows reduction in child case rate from the year 2012-13 (1.07) by 11.21%
6. Trend of leprosy Prevalence (PR) and Annual New Case Detection (ANCDR) are indicated in the graph below:



Note: The increase in new cases and prevalence during 2012-13 was attributable to the NLEP strategy to carry out extensive house to house survey for new case detection and to treat them with MDT to cut down the transmission potential in the future. In 2013-14, both PR and ANCDR have shown decreasing trend in spite of the extensive surveys carried out, covering both high and low endemic districts.

Status in the States/UTs

Further analysis of information received from the States / UTs (Annexure – III) has shown the following situation.

- 33 States/ UTs had already achieved the level of elimination i.e. PR less than 1 case per 10,000 population and they are:

Nagaland, Haryana, Meghalaya, Himachal Pradesh, Mizoram, Tripura, Punjab, Sikkim, Jammu & Kashmir, Assam, Manipur, Rajasthan, Kerala, Arunachal Pradesh, Daman & Diu, A & N Islands, Puducherry, Gujarat, Karnataka, Lakshadweep, Tamil Nadu, Andhra Pradesh, Uttarakhand, Madhya Pradesh, Maharashtra, Goa, Odisha, Uttar Pradesh, Delhi, Jharkhand, West Bengal, Chandigarh and Bihar.
- One State (Chhattisgarh) and One U.T. (Dadra & Nagar Haveli) has remained with PR between 2 and 4 per 10,000 population. Three other States/UT viz. Odisha, Chandigarh and Lakshadweep which achieved elimination earlier have shown slight increase in P.R. (1-2), in the current year..
- Proportion of Child case was more than 10% of new case detected in 13 States/UTs namely (i) Andhra Pradesh 10.90%, (ii) Maharashtra 12.70%, (iii) Bihar 15.55%, (iv) Goa 11.11%, (v) Puducherry 12.28%, (vi) D&N Haveli 23.75%, (vii) J&K 11.43% (viii) Punjab 12.96%, (ix) Kerala 10.87% (x) Nagaland 10.13%, (xi) A&N Islands 15.63% (xii) Sikkim 11.11% and (xiii) Lakshadweep 15.38%.
- PB Child proportion was high in 4 States/UTs namely (i) Bihar 11.04% (ii) D&N Haveli 21.88%, (iii) A&N Islands 12.50% and (iv) Puducherry 10.53%.

Status in the Districts

1. District wise situation on the basis of ANCDR as on 31st March 2014 is given at Annexure IV. 459 (69.86%) districts out of total 657, have ANCDR < 10 per 100,000 population and 83 districts have ANCDR > 20/100,000. Only 18 districts with ANCDR > 50/100,000 population are in Bihar (2), Chhattisgarh (2), Gujarat (5), Maharashtra (2), Dadra & Nagar Haveli (1) and Odisha (6).

Year wise endemicity of districts on ANCDR basis

ANCDR/100,000	2008-09	2009-10	2010-11	2011-12	2012-13	2013-14
<10	394	405	431	444	443	459
10-20	159	144	132	122	119	115
>20-50	73	79	70	63	73	65
>50-100	4	5	7	11	13	16
>100	0	0	0	0	1	2
Total	630	633	640	640	649	657

2. District wise situation on PR basis as on 31st March 2014 is given at Annexure-V. Progress in district situation during last 6 years is as below:

Year wise Status Of Districts on PR basis

PR/10,000	2009	2010	2011	2012	2013	2014
<1	510	510	530	542	528	542
1-2	94	103	80	71	85	74
2-5	25	20	29	26	30	38
5-10	1	0	0	1	6	3
>10	0	0	1	0	0	0
Total	630	633	640	640	649	657

A total of 542 districts (82.50%), out of total 657 districts have PR<1/10,000 population. The number of districts with PR between 1 to 2/10,000 have gone down from 85 to 74. Number of districts with PR>2/10,000 have increased from 36 to 41.

As on March 2014, only 41 districts in 11 States/UTs are having PR > 2/10,000. These states are Bihar (3), Odisha (10), Chhattisgarh (11), Uttar Pradesh (1), Gujarat (6), Mizoram (1), Nagaland (1), Maharashtra (4), West Bengal (2), D&N Haveli (1) and Delhi (1)

3. Position of districts as per grade II disability status has been given at Annexure – VI. Gr. II disability rate >2/million population has been reported in 315 districts (47.95%).
4. Out of the total 1.31 lakh New Cases deleted from record, a total of 1.25 lakh (94.6%) completed their treatment within the specified period and were released from treatment (RFT) as cured during 2013-14 (Annexure – VII). Poor performing states are Delhi (76.8%), Tripura (74.6%), and Rajasthan (81.2%).
5. Out of the total 12283 “Others Cases” deleted from record during 2013-14, a total of 9620 (78.3%) completed their treatment on time and were released from treatment (RFT) as cured. (Annexure – VIII).
6. Total number of cases released as cured during 2013-14, comes to 134140 (93.6%) as against total deletion of 143364. This brings the total number of persons affected by Leprosy cured of the disease with MDT in the country, from the beginning till date, to 12.93 million.

7. Blocks with ANCDR < 10 /100,000 population are 4242 (66.37%) , out of total 6391 blocks reported.
8. Urban areas with ANCDR < 10/1000, 000 population are 461 (84.59%), out of 545 urban areas reported.

Other Programme aspects

A. DPMR Services

Information pertaining to the Disability Prevention and Medical Rehabilitation (DPMR) as received from the States/UTs is given at Annexure – IX.

1. Total 111 (Govt.- 60 and NGO- 51) Institutions have been recognized for conducting Reconstructive Surgery to correct the disability in Leprosy Affected Persons.
2. During the year 2013-14 a total of 2707 RCS (Govt. – 921 and NGO – 1786) were conducted.
3. A total of 12901 Reaction/Neuritis episodes were recorded and treated at PHCs and in Secondary level Institutions.
4. At the PHC level 486 Relapse Cases were suspected and referred to the District Hospitals. A total of 433 Relapse were confirmed and treated at District Hospital.
5. MCR footwear were provided to 69331 Leprosy Affected Persons.
6. Self Care Kits were provided to 44412 Leprosy Affected Persons.

B. ASHA Involvement

ASHAs under the NRHM were involved in Leprosy programme for last 6 years. However during 2013-14, their participation has substantially improved.

C. Active case detection

Search activities for early detection of New Leprosy cases were carried out during the year 2013-14 as below.

- (i) Intensive Case Detection Drive (ICDD) was carried out in all the high endemic blocks of low endemic districts, along with special action plan activities in the remaining blocks of High endemic districts, that were left out during 2012-13.. A total of 8398 New Leprosy cases were detected during these search. State/UT wise details are at Annexure IX.
- (ii) Active search through house to house visit were also carried out in low endemic areas during the Anti leprosy fortnight from 30th January to 13th February 2014. A total of 3215 New Leprosy cases were detected during these search. State/UT wise details are at Annexure X .

Thus, a total of 11613 New cases were detected through active search in the year 2013-14. Amongst these cases MB 4846 (41.7%), Child 1093 (9.4%), Gr I disability 651 (5.6%) and Gr. II disability 443 (3.8%) were detected.

NATIONAL LEPROSY ERADICATION PROGRAMME

MONTHLY PROGRESS REPORT FOR THE YEAR 2013-14

Sl. no.	State/UT	Census Population as on Mar-14	Cases on record as on 3/13	No. of new cases detected			Cases on record at the end of month	Prevalence Rate per 10000 Population
				PB	MB	Total		
1	Andhra Pradesh	87386537	5235	3326	3782	7108	4809	0.55
2	Arunachal Pradesh	1481525	47	1	22	23	29	0.20
3	Assam	32670162	1131	259	789	1048	965	0.30
4	Bihar	111002848	13017	10823	7365	18188	10100	0.91
5	Chhattisgarh	27151318	5656	4117	4402	8519	5700	2.10
6	Goa	1492545	37	18	54	72	60	0.40
7	Gujarat	63647086	5981	5494	4227	9721	5282	0.83
8	Haryana	26770592	692	157	465	622	714	0.27
9	Himachal Pradesh	7108424	148	27	134	161	157	0.22
10	Jharkhand	35025210	2276	2054	1967	4021	2457	0.70
11	J&K	13436256	219	48	127	175	200	0.15
12	Karnataka	63866391	2789	1295	2171	3466	2800	0.44
13	Kerala	33870771	810	261	521	782	839	0.25
14	Madhya Pradesh	76746920	5589	2208	4161	6369	5399	0.70
15	Maharashtra	117471259	12659	6979	9421	16400	10813	0.92
16	Manipur	2864628	23	4	8	12	9	0.03
17	Meghalaya	3190977	29	7	17	24	26	0.08
18	Mizoram	1160178	18	15	15	30	25	0.22
19	Nagaland	1977633	99	17	141	158	123	0.62
20	Odisha	43630496	4222	5668	4977	10645	6405	1.47
21	Punjab	28798808	605	136	512	648	529	0.18
22	Rajasthan	72735528	1185	124	955	1079	1237	0.17
23	Sikkim	629268	14	8	10	18	15	0.24
24	Tamil Nadu	75345001	2930	1770	2040	3810	2993	0.40
25	Tripura	3826252	69	11	26	37	47	0.12
26	Uttar Pradesh	210864433	14865	13250	9315	22565	14428	0.68
27	Uttarakhand	10663516	262	187	189	376	237	0.22

28	West Bengal	94984932	9855	2655	6466	9121	8242	0.87
29	A & N Islands	387401	14	18	14	32	28	0.72
30	Chandigarh	1105799	63	50	94	144	135	1.22
31	D & N Haveli	391365	135	223	97	320	158	4.04
32	Daman & Diu	276248	0	3	1	4	1	0.04
33	Delhi	17736868	1262	316	829	1145	1138	0.64
34	Lakshadweep	65615	0	10	3	13	13	1.98
35	Puducherry	1339367	27	37	20	57	34	0.25
	Total	1271102157	91963	61576	65337	126913	86147	0.68

NATIONAL LEPROSY ERADICATION PROGRAMME

MONTHLY PROGRESS REPORT FOR THE YEAR 2013-14

SI no	State/UT	Percentage of New Cases Detected													
		MB		Female		Child						Schedule Tribe among New Cases		Schedule Caste	
						MB		PB		Total					
		No.	%	No.	%	No	%	No	%	Total	%	No.	%	No.	%
1	Andhra Pradesh	3782	53.21	2791	39.27	217	3.05	558	7.85	775	10.90	956	13.45	1788	25.15
2	Arunachal Pradesh	22	95.65	7	30.43	1	4.35	0	0.00	1	4.35	15	65.22	1	4.35
3	Assam	789	75.29	294	28.05	54	5.15	43	4.10	97	9.26	50	4.77	29	2.77
4	Bihar	7365	40.49	6882	37.84	820	4.51	2008	11.04	2828	15.55	237	1.30	4323	23.77
5	Chhattisgarh	4402	51.67	3269	38.37	178	2.09	365	4.28	543	6.37	1773	20.81	1343	15.76
6	Goa	54	75.00	37	51.39	4	5.56	4	5.56	8	11.11	0	0.00	0	0.00
7	Gujarat	4227	43.48	4648	47.81	220	2.26	687	7.07	907	9.33	6277	64.57	255	2.62
8	Haryana	465	74.76	132	32.00	6	0.96	8	1.29	14	2.25	17	2.73	45	7.23
9	Himachal Pradesh	134	83.23	41	25.47	2	1.24	2	1.24	4	2.48	1	0.62	24	14.91
10	Jharkhand	1967	48.92	1426	35.46	141	3.51	187	4.65	328	8.16	1247	31.01	680	16.91
11	Jammu & Kashmir	127	72.57	41	23.43	16	9.14	4	2.29	20	11.43	3	1.71	4	2.29
12	Karnataka	2171	62.64	1278	36.87	107	3.09	213	6.15	320	9.23	303	8.74	785	22.65
13	Kerala	521	66.62	213	27.24	18	2.30	67	8.57	85	10.87	0	0.00	0	0.00
14	Madhya Pradesh	4161	65.33	2219	34.84	192	3.01	188	2.95	380	5.97	1831	28.75	1041	16.34
15	Maharashtra	9421	57.45	7290	44.45	605	3.69	1478	9.01	2083	12.70	4742	28.91	2443	14.90
16	Manipur	8	66.67	6	50.00	1	8.33	0	0.00	1	8.33	6	50.00	0	0.00
17	Meghalaya	17	70.83	1	4.17	1	4.17	0	0.00	1	4.17	6	25.00	1	4.17
18	Mizoram	15	50.00	0	0.00	0	0.00	2	6.67	2	6.67	0	0.00	1	3.33
19	Nagaland	141	89.24	58	36.71	12	7.59	4	2.53	16	10.13	71	44.94	82	51.9
20	Odisha	4977	46.75	4120	38.70	261	2.45	647	6.08	908	8.53	3172	29.80	2094	19.67
21	Punjab	512	79.01	58	8.95	44	6.79	40	6.17	84	12.96	4	0.62	21	3.24
22	Rajasthan	955	88.51	294	27.25	17	1.58	4	0.37	21	1.95	115	10.66	164	15.20
23	Sikkim	10	55.56	7	38.89	1	5.56	1	5.56	2	11.11	3	16.67	2	11.11

24	Tamil Nadu	2040	53.54	1118	29.34	57	1.50	292	7.66	349	9.16	62	1.63	513	13.46
25	Tripura	26	70.27	7	18.92	0	0.00	0	0.00	0	0.00	13	35.14	5	13.51
26	Uttar Pradesh	9315	41.28	7297	32.34	477	2.11	894	3.96	1371	6.08	129	0.57	5422	24.03
27	Uttarakhand	189	50.27	118	31.38	6	1.60	9	2.39	15	3.99	17	4.52	67	17.82
28	West Bengal	6466	70.89	2669	29.26	377	4.13	331	3.63	708	7.76	1305	14.31	1744	19.1
29	A & N Islands	14	43.8	16	50.00	1	3.13	4	12.50	5	15.63	0	0.00	0	0.00
30	Chandigarh	94	65.28	41	28.47	4	2.78	5	3.47	9	6.25	0	0.00	0	0.00
31	D & N Haveli	97	30.31	178	55.63	6	1.88	70	21.88	76	23.75	317	99.06	0	0.00
32	Daman & Diu	1	0.00	1	0.00	1	0.00	3	0.00	4	0.00	2	0.00	0	0.00
33	Delhi	829	72.40	261	22.79	38	3.32	31	2.71	69	6.03	0	0.00	0	0.00
34	Lakshadweep	3	23.08	6	46.15	2	15.38	0	0.00	2	15.38	13	100.00	0	0.00
35	Puducherry	20	35.09	21	36.84	1	1.75	6	10.53	7	12.28	0	0.00	3	5.3
	Total	65337	51.48	46845	36.91	3888	3.06	8155	6.43	12043	9.49	22687	17.88	22880	18.03

NATIONAL LEPROSY ERADICATION PROGRAMME

MONTHLY PROGRESS REPORT FOR THE YEAR 2013-14

SI no	State/UT	% of New Cases				Reconstructive Surgery					Cases deleted		
		Deformity				Recognised RCS Instt.		RCS performed			RFT	Other-wise deletion	Total
		Grade - I		Grade-II		Govt	NGO	Govt	NGO	Total			
		No.	%	No.	%								
1	Andhra Pradesh	226	3.18	418	5.88	1	9	0	487	487	7466	87	7553
2	Arunachal Pradesh	19	82.61	4	17.39	0	0	0	0	0	35	6	41
3	Assam	93	8.87	80	7.63	1	1	0	16	16	1114	100	1214
4	Bihar	305	1.68	513	2.82	2	2	21	64	85	20309	796	21105
5	Chhattisgarh	468	5.49	607	7.13	1	1	234	5	239	8137	335	8472
6	Goa	0	0.00	0	0.00	1	0	0	0	0	48	0	48
7	Gujarat	430	4.42	298	3.07	3	0	136	0	136	10293	127	10420
8	Haryana	128	20.58	37	5.95	0	0	0	0	0	588	12	600
9	Himachal Pradesh	33	20.50	21	13.04	0	0	0	0	0	130	22	152
10	Jharkhand	138	3.43	88	2.19	2	3	10	47	57	3624	216	3840
11	Jammu & Kashmir	0	0.00	3	1.71	1	0	0	0	0	194	0	194
12	Karnataka	252	7.27	129	3.72	4	7	34	106	140	3314	142	3456
13	Kerala	0	0.00	66	8.44	0	0	0	0	0	738	6	744
14	Madhya Pradesh	1049	16.47	317	4.98	2	1	122	91	213	6132	212	6344
15	Maharashtra	736	4.49	813	4.96	9	8	39	456	495	17001	522	17523
16	Manipur	2	16.67	3	25.00	1	0	0	0	0	22	4	26

17	Meghalaya	7	29.17	5	20.83	0	0	0	0	0	23	4	27
18	Mizoram	0	0.00	0	0.00	0	0	0	0	0	6	0	6
19	Nagaland	35	22.15	38	24.05	0	0	0	0	0	85	2	87
20	Odisha	499	4.69	449	4.22	8	0	248	0	248	8256	206	8462
21	Punjab	23	3.55	33	5.09	0	0	0	0	0	709	22	731
22	Rajasthan	208	19.28	40	3.71	0	0	2	0	2	823	191	1014
23	Sikkim	0	0.00	1	5.56	1	0	1	0	1	13	2	15
24	Tamil Nadu	149	3.91	164	4.30	2	8	1	106	107	3412	335	3747
25	Tripura	1	2.70	6	16.22	0	0	0	0	0	44	15	59
26	Uttar Pradesh	711	3.15	722	3.20	2	3	33	235	268	20987	2015	23002
27	Uttarakhand	12	3.19	11	2.93	1	0	15	0	15	368	33	401
28	West Bengal	273	2.99	234	2.57	9	2	18	90	108	9241	1452	10693
29	A & N Islands	3	9.38	2	6.25	0	0	0	0	0	15	0	15
30	Chandigarh	2	1.39	2	1.39	1	0	0	0	0	71	0	71
31	D & N Haveli	0	0.00	0	0.00	0	0	0	0	0	292	2	294
32	Daman & Diu	0	0.00	1	0.00	0	0	0	0	0	3	0	3
33	Delhi	125	10.92	150	13.10	3	3	5	83	88	974	295	1269
34	Lakshadweep	0	0.00	0	0.00	0	0	0	0	0	0	0	0
35	Puduchery	5	8.77	1	1.75	3	0	2	0	2	53	0	53
	Total	5932	4.67	5256	4.14	58	48	921	1786	2707	124520	7161	131681

**STATEMENT SHOWING CHILD RATE AND DISABILITY RATE AGAINST
POPULATION DURING THE YEAR 2013-14**

S.No.	State / UT	Population as on March 2014	Child Case Rate		New Disability Case Rate	
			Number of Child cases	Rate per 100,000 pop.	Number of new cases with Gr.II disability	Rate per million pop.
1	Andhra Pradesh	87386537	775	0.89	418	4.78
2	Arunachal Pradesh	1481525	1	0.07	4	2.70
3	Assam	32670162	97	0.30	80	2.45
4	Bihar	111002848	2828	2.55	513	4.62
5	Chhattisgarh	27151318	543	2.00	607	22.36
6	Goa	1492545	8	0.54	0	0.00
7	Gujarat	63647086	907	1.43	298	4.68
8	Haryana	26770592	14	0.05	37	1.38
9	Himachal Pradesh	7108424	4	0.06	21	2.95
10	Jharkhand	35025210	328	0.94	88	2.51
11	Jammu & Kashmir	13436256	20	0.15	3	0.22
12	Karnataka	63866391	320	0.50	129	2.02
13	Kerala	33870771	85	0.25	66	1.95
14	Madhya Pradesh	76746920	380	0.50	317	4.13
15	Maharashtra	117471259	2083	1.77	813	6.92
16	Manipur	2864628	1	0.03	3	1.05
17	Meghalaya	3190977	1	0.03	5	1.57
18	Mizoram	1160178	2	0.17	0	0.00
19	Nagaland	1977633	16	0.81	38	19.21
20	Odisha	43630496	908	2.08	449	10.29
21	Punjab	28798808	84	0.29	33	1.15
22	Rajasthan	72735528	21	0.03	40	0.55

23	Sikkim	629268	2	0.32	1	1.59
24	Tamil Nadu	75345001	349	0.46	164	2.18
25	Tripura	3826252	0	0.00	6	1.57
26	Uttar Pradesh	210864433	1371	0.65	722	3.42
27	Uttarakhand	10663516	15	0.14	11	1.03
28	West Bengal	94984932	708	0.75	234	2.46
29	A & N Islands	387401	5	1.29	2	5.16
30	Chandigarh	1105799	9	0.81	2	1.81
31	D & N Haveli	391365	76	19.42	0	0.00
32	Daman & Diu	276248	4	1.45	1	3.62
33	Delhi	17736868	69	0.39	150	8.46
34	Lakshadweep	65615	2	3.05	0	0.00
35	Pondicherry	1339367	7	0.52	1	0.75
	Total	1271102157	12043	0.95	5256	4.13

Statement showing States/ UTs in relation to Elimination Status

(As on March 2014)

I. 2 States/UTs with PR > 1/10,000

S. No.	State	Population as on March 2014	% of country's population	No. of cases on record	% of country's case load	PR/ 10,000 *	No. of new cases detected	% of country's new case	ANCDR/ 100,000
1	2	3	4	5	6	7	8	9	10
1	D&N Haveli	391365	0.03	158	0.18	4.04	320	0.25	81.77
2	Chhattisgarh	27151318	2.14	5700	6.62	2.10	8519	6.71	31.38
	Total of I	27542683	-	5858	-	2.13	8839	-	32.09
	Percentage	-	2.17	-	6.80	-	-	6.96	-

II. 33 States/ UTs where elimination achieved (PR < 1/10,000)

S. No.	State	Population as on March 2014	% of country's population	No. of cases on record	% of country's case load	PR/ 10,000 *	No. of new cases detected	% of country's new case	ANCDR/ 100,000
1	2	3	4	5	6	7	8	9	10
1	Orissa	43630496	3.43	6405	7.44	1.47	10645	0.84	24.40
2	Lakshadweep	65615	0.01	13	7.44	1.98	13	0.00	19.81
3	Bihar	111002848	8.73	10100	11.73	0.91	18188	1.43	16.39
4	Gujarat	63647086	5.01	5282	6.13	0.83	9721	0.77	15.27
5	Maharashtra	117471259	9.24	10813	12.55	0.92	16400	1.29	13.96
6	Chandigarh	1105799	0.09	135	12.55	1.22	144	0.01	13.02
7	Jharkhand	35025210	2.76	2457	0.16	0.70	4021	0.32	11.48
8	Uttar Pradesh	210864433	16.59	14428		0.68	22565	1.78	10.70
9	West Bengal	94984932	7.47	8242	9.57	0.87	9121	0.72	9.60
10	Madhya Pradesh	76746920	6.04	5399	9.57	0.70	6369	0.50	8.30
11	A&N Island	387401	0.03	28	6.27	0.72	32	0.00	8.26

12	Andhra Pradesh	87386537	6.87	4809	0.03	0.55	7108	0.56	8.13
13	Nagaland	1977633	0.16	123	5.58	0.62	158	0.01	7.99
14	Delhi	17736868	1.40	1138	0.14	0.64	1145	0.09	6.46
15	Karnataka	63866391	5.02	2800	1.32	0.44	3466	0.27	5.43
16	Tamilnadu	75345001	5.93	2993	3.25	0.40	3810	0.30	5.06
17	Goa	1492545	0.12	60	3.47	0.40	72	0.01	4.82
18	Puducherry	1339367	0.11	34	0.07	0.25	57	0.00	4.26
19	Uttarakhand	10663516	0.84	237	0.04	0.22	376	0.03	3.53
20	Assam	32670162	2.57	965	0.28	0.30	1048	0.08	3.21
21	Sikkim	629268	0.05	15	1.12	0.24	18	0.00	2.86
22	Mizoram	1160178	0.09	25	0.02	0.22	30	0.00	2.59
23	Haryana	26770592	2.11	714	0.03	0.27	622	0.05	2.32
24	Kerala	33870771	2.66	839	0.83	0.25	782	0.06	2.31
25	Himachal Pradesh	7108424	0.56	157	0.97	0.22	161	0.01	2.26
26	Punjab	28798808	2.27	529	0.18	0.18	648	0.05	2.25
27	Arunachal Pradesh	1481525	0.12	29	0.61	0.20	23	0.00	1.55
28	Rajasthan	72735528	5.72	1237	0.03	0.17	1079	0.09	1.48
29	Daman & Diu	276248	0.02	1	1.44	0.04	4	0.00	1.45
30	Jammu & Kashmir	13436256	1.06	200	0.00	0.15	175	0.01	1.30
31	Tripura	3826252	0.30	47	0.23	0.12	37	0.00	0.97
32	Meghalaya	3190977	0.25	26	0.05	0.08	24	0.00	0.75
33	Manipur	2864628	0.23	9	0.03	0.03	12	0.00	0.42
	Total of II	1243559474	-	80289	-	0.65	118074	-	9.49
	Percentage	-	97.83	-	93.20	-	-	93.04	-
	Grand Total (I+II)	1271102157	100.00	86147	100.00	0.68	126913	100.00	9.98
* - States / UTs are listed in the descending order of ANCDR									

STATEMENT SHOWING STATEWISE POSITION OF DISTRICTS

ACCORDING TO ANNUAL NEW CASE DETECTION RATE (ANCDR) - 2013-14

S.No.	State / UT	Total No. of Districts	ANCDR/100,000 in no. of Districts (As on March 2014)				
			< 10	10 to 20	>20 to 50	>50 to 100	>100
1	2	3	4	5	6	7	8
1	Andhra Pradesh	23	18	5	0	0	0
2	Arunachal Pradesh	17	17	0	0	0	0
3	Assam	27	24	3	0	0	0
4	Bihar	38	7	18	11	1	1
5	Chhattisgarh	27	7	4	14	2	0
6	Goa	2	2	0	0	0	0
7	Gujarat	26	16	0	5	4	1
8	Haryana	21	20	1	0	0	0
9	Himachal Pradesh	12	12	0	0	0	0
10	Jharkhand	24	10	12	2	0	0
11	Jammu & Kashmir	22	22	0	0	0	0
12	Karnataka	30	25	5	0	0	0
13	Kerala	14	14	0	0	0	0
14	Madhya Pradesh	50	35	13	2	0	0
15	Maharashtra	34	14	10	8	2	0
16	Manipur	9	9	0	0	0	0
17	Meghalaya	7	7	0	0	0	0
18	Mizoram	9	8	0	1	0	0
19	Nagaland	11	10	1	0	0	0
20	Odisha	31	6	7	12	6	0
21	Punjab	20	20	0	0	0	0
22	Rajasthan	33	33	0	0	0	0
23	Sikkim	4	4	0	0	0	0
24	Tamil Nadu	32	32	0	0	0	0

25	Tripura	4	4	0	0	0	0
26	Uttar Pradesh	75	42	27	6	0	0
27	Uttarakhand	13	13	0	0	0	0
28	West Bengal	19	11	5	3	0	0
29	A & N Islands	3	2	1	0	0	0
30	Chandigarh	1	0	1	0	0	0
31	D & N Haveli	1	0	0	0	1	0
32	Daman & Diu	2	2	0	0	0	0
33	Delhi	11	9	1	1	0	0
34	Lakshadweep	1	0	1	0	0	0
35	Puducherry	4	4	0	0	0	0
Total		657	459	115	65	16	2
Percentage			69.86	17.50	9.89	2.44	0.30

STATEMENT SHOWING STATEWISE POSITION OF DISTRICTS

ACCORDING TO PREVALENCE RATE

S.No.	State / UT	Total No. of Districts	PR/10,000 in no. of Districts (As on March 2014)					
			< 1	1 to 2	>2 to 5	>5 to 10	>10 to 20	>20
1	2	3	4	5	6	7	8	9
1	Andhra Pradesh	23	22	1	0	0	0	0
2	Arunachal Pradesh	17	17	0	0	0	0	0
3	Assam	27	27	0	0	0	0	0
4	Bihar	38	23	12	3	0	0	0
5	Chhattisgarh	27	10	6	10	1	0	0
6	Goa	2	2	0	0	0	0	0
7	Gujarat	26	16	4	4	2	0	0
8	Haryana	21	20	1	0	0	0	0
9	Himachal Pradesh	12	12	0	0	0	0	0
10	Jharkhand	24	20	4	0	0	0	0
11	Jammu & Kashmir	22	22	0	0	0	0	0
12	Karnataka	30	29	1	0	0	0	0
13	Kerala	14	14	0	0	0	0	0
14	Madhya Pradesh	50	41	9	0	0	0	0
15	Maharashtra	34	21	9	4	0	0	0
16	Manipur	9	9	0	0	0	0	0
17	Meghalaya	7	7	0	0	0	0	0
18	Mizoram	9	8	0	1	0	0	0
19	Nagaland	11	9	1	1	0	0	0
20	Odisha	31	14	7	10	0	0	0
21	Punjab	20	20	0	0	0	0	0
22	Rajasthan	33	33	0	0	0	0	0
23	Sikkim	4	4	0	0	0	0	0
24	Tamil Nadu	32	32	0	0	0	0	0
25	Tripura	4	4	0	0	0	0	0

26	Uttar Pradesh	75	64	10	1	0	0	0
27	Uttarakhand	13	13	0	0	0	0	0
28	West Bengal	19	11	6	2	0	0	0
29	A & N Islands	3	3	0	0	0	0	0
30	Chandigarh	1	0	1	0	0	0	0
31	D & N Haveli	1	0	0	1	0	0	0
32	Daman & Diu	2	2	0	0	0	0	0
33	Delhi	11	9	1	1	0	0	0
34	Lakshadweep	1	0	1	0	0	0	0
35	Puducherry	4	4	0	0	0	0	0
Total		657	542	74	38	3	0	0
Percentage			82.50	11.26	5.78	0.46	0.00	0.00

STATEMENT SHOWING STATEWISE POSITION OF DISTRICTS

According to Gr.II Disability - 2013-14

Sl.No	State / UT	Total No. of Districts	Gr II disability rate per million population in number of districts (March-2014)			Gr.-II disability rate for the state
			< 1	1 to 2	> 2	
1	2	3	4	5	6	7
1	Andhra Pradesh	23	1	3	19	4.78
2	Arunachal Pradesh	17	14	0	3	2.70
3	Assam	27	13	7	7	2.45
4	Bihar	38	7	2	29	4.62
5	Chhattisgarh	27	4	0	23	22.36
6	Goa	2	2	0	0	0.00
7	Gujarat	26	7	1	18	4.68
8	Haryana	21	14	3	4	1.38
9	Himachal Pradesh	12	7	0	5	2.95
10	Jharkhand	24	8	6	10	2.51
11	Jammu & Kashmir	22	20	2	0	0.22
12	Karnataka	30	12	7	11	2.02
13	Kerala	14	7	0	7	1.95
14	Madhya Pradesh	50	10	9	31	4.13
15	Maharashtra	34	0	3	31	6.92
16	Manipur	9	6	1	2	1.05
17	Meghalaya	7	5	1	1	1.57
18	Mizoram	9	9	0	0	0.00
19	Nagaland	11	10	0	1	13.65
20	Orissa	31	1	4	26	10.29
21	Punjab	20	15	1	4	1.15
22	Rajasthan	33	28	2	3	0.55
23	Sikkim	4	3	0	1	1.59

24	Tamil Nadu	32	9	12	11	2.18
25	Tripura	4	2	0	2	1.57
26	Uttar Pradesh	75	16	12	47	3.42
27	Uttarakhand	13	11	0	2	1.03
28	West Bengal	19	5	5	9	2.46
29	A & N Islands	3	2	0	1	5.20
30	Chandigarh	1	0	1	0	1.81
31	D & N Haveli	1	1	0	0	0.00
32	Daman & Diu	2	1	0	1	3.62
33	Delhi	11	3	2	6	8.46
34	Lakshadweep	1	1	0	0	0.00
35	Puducherry	4	4	0	0	0.75
	Total	657	258	84	315	4.13
	Percentage		39.27	12.79	47.95	

Statement showing new cases Released from Treatment (RFT) as cured

Period - April '13 to March '14'

Sl.No.	State/ UT	Cases Deleted			Percentage of case released as cured *
		RFT	Otherwise	Total	
1	2	3	4	5	6
1	Andhra Pradesh	7466	87	7553	98.85
2	Arunachal Pradesh	35	6	41	85.37
3	Assam	1114	100	1214	91.76
4	Bihar	20309	796	21105	96.23
5	Chhattisgarh	8137	335	8472	96.05
6	Goa	48	0	48	100.00
7	Gujarat	10293	127	10420	98.78
8	Haryana	588	12	600	98.00
9	Himachal Pradesh	130	22	152	85.53
10	Jharkhand	3624	216	3840	94.38
11	Jammu & Kashmir	194	0	194	100.00
12	Karnataka	3314	142	3456	95.89
13	Kerala	738	6	744	99.19
14	Madhya Pradesh	6132	212	6344	96.66
15	Maharashtra	17001	522	17523	97.02
16	Manipur	22	4	26	84.62
17	Meghalaya	23	4	27	85.19
18	Mizoram	6	0	6	100.00
19	Nagaland	85	2	87	97.70
20	Orissa	8256	206	8462	97.57
21	Punjab	709	22	731	96.99
22	Rajasthan	823	191	1014	81.16
23	Sikkim	13	2	15	86.67
24	Tamil Nadu	3412	335	3747	91.06
25	Tripura	44	15	59	74.58
26	Uttar Pradesh	20987	2015	23002	91.24

27	Uttarakhand	368	33	401	91.77
28	West Bengal	9241	1452	10693	86.42
29	A & N Islands	15	0	15	100.00
30	Chandigarh	71	0	71	100.00
31	D & N Haveli	292	2	294	99.32
32	Daman & Diu	3	0	3	100.00
33	Delhi	974	295	1269	76.75
34	Lakshadweep	0	0	0	0.00
35	Pondicherry	53	0	53	100.00
	Total	124520	7161	131681	94.56

* Cured are patients that completed full MDT course in stipulated time.

Statement showing other cases Released from Treatment (RFT) as cured

Period - April '13 to March '14'

Sl.No.	State/ UT	Cases Deleted			Percentage of case released as cured *
		RFT	Otherwise	Total	
1	2	3	4	5	6
1	Andhra Pradesh	124	42	166	74.70
2	Arunachal Pradesh	0	0	0	0.00
3	Assam	88	120	208	42.31
4	Bihar	945	135	1080	87.50
5	Chhattisgarh	185	37	222	83.33
6	Goa	56	0	56	100.00
7	Gujarat	66	15	81	81.48
8	Haryana	55	12	67	82.09
9	Himachal Pradesh	8	6	14	57.14
10	Jharkhand	399	68	467	85.44
11	Jammu & Kashmir	1	0	1	100.00
12	Karnataka	305	117	422	72.27
13	Kerala	33	0	33	100.00
14	Madhya Pradesh	159	18	177	89.83
15	Maharashtra	979	78	1057	92.62
16	Manipur	8	0	8	100.00
17	Meghalaya	16	0	16	100.00
18	Mizoram	0	0	0	0.00
19	Nagaland	7	0	7	100.00
20	Orissa	698	8	706	98.87
21	Punjab	119	12	131	90.84
22	Rajasthan	72	56	128	56.25
23	Sikkim	0	0	0	0.00
24	Tamil Nadu	237	21	258	91.86
25	Tripura	4	0	4	100.00

26	Uttar Pradesh	1853	849	2702	68.58
27	Uttarakhand	130	101	231	56.28
28	West Bengal	1495	421	1916	78.03
29	A & N Islands	4	0	4	100.00
30	Chandigarh	139	39	178	78.09
31	D & N Haveli	44	11	55	80.00
32	Daman & Diu	0	0	0	0.00
33	Delhi	1391	497	1888	73.68
34	Lakshadweep	0	0	0	0.00
35	Pondicherry	0	0	0	0.00
	Total	9620	2663	12283	78.32

STATEMENT SHOWING STATEWISE POSITION OF DPMR SERVICES

during the year 2013-2014

S. No.	State / UT	Instts. Recognized for RCS		RCS Performed		Cases of Reaction /Neuritis recorded	Relapse cases		cases developed new disability after MDT	Cases provided with	
		Govt.	NGO	Govt.	NGO		Suspected at PHC	Confirmed at DH		Footwear	Self care kit
1	2	3	4	5	6	7	8	9	10	11	12
1	Andhra Pradesh	1	9	0	487	583	24	20	26	5368	4131
2	Arunachal Pradesh	0	0	0	0	0	0	2	0	0	0
3	Assam	1	1	0	16	114	0	1	6	509	19
4	Bihar	2	2	21	64	514	7	8	12	1957	921
5	Chhattisgarh	1	2	234	5	1708	22	41	27	771	278
6	Goa	1	0	0	0	18	0	0	0	130	59
7	Gujarat	3	0	136	0	813	0	0	0	13084	2264
8	Haryana	1	0	0	0	2	0	0	0	646	86
9	Himachal Pradesh	0	0	0	0	5	0	1	0	13	0
10	Jharkhand	2	3	10	47	525	0	0	2	2360	664
11	Jammu & Kashmir	0	0	0	0	0	0	0	0	0	0
12	Karnataka	5	4	34	106	274	4	4	1	4226	2233
13	Kerala	0	2	0	0	54	0	0	0	86	0
14	Madhya Pradesh	2	1	122	91	549	1	0	7	3825	1520
15	Maharashtra	9	8	39	456	1427	236	236	128	8820	2465
16	Manipur	1	0	0	0	7	2	2	0	87	61
17	Meghalaya	0	0	0	0	8	0	0	0	26	0
18	Mizoram	0	0	0	0	0	0	0	0	0	0
19	Nagaland	0	0	0	0	0	0	0	0	16	21
20	Orissa	10	5	248	0	2510	22	42	8	6443	5295
21	Punjab	0	0	0	0	11	0	0	0	1055	64
22	Rajasthan	1	0	2	0	65	7	13	1	1686	1003
23	Sikkim	1	0	1	0	5	0	0	0	24	11

24	Tamil Nadu	2	8	1	106	183	29	23	1	9481	8303
25	Tripura	0	0	0	0	0	1	1	0	24	0
26	Uttar Pradesh	3	2	33	235	1772	79	5	9	1702	1269
27	Uttarakhand	1	0	15	0	91	0	0	0	642	2670
28	West Bengal	9	2	18	90	1280	51	31	9	5529	10261
29	A & N Islands	0	0	0	0	4	0	0	0	68	0
30	Chandigarh	1	0	0	0	26	0	0	0	33	21
31	D & N Haveli	0	0	0	0	6	0	0	0	8	0
32	Daman & Diu	0	0	0	0	0	0	0	0	3	0
33	Delhi	2	2	5	83	343	0	0	0	551	643
34	Lakshadweep	0	0	0	0	0	0	0	0	0	0
35	Pondicherry	1	0	2	0	4	1	3	0	158	150
Total		60	51	921	1786	12901	486	433	237	69331	44412
Total of Govt.+NGO		111		2707							

National Leprosy Eradication Programme

Special Activity Plan (SAP)/ICDD - 2013-14

Report on Active Search

S. No.	Name of State/UT	Period of Search activity	Population		Leprosy cases detected			No. of disability			No. of child cases			Blocks Covered
			Enumerated	Examined	MB	PB	Total	Gr. I	Gr. II	Total	MB	PB	Total	
1	Andhra Pradesh	2013-2014	596635	500907	35	55	90	4	3	7	0	4	4	98
2	Arunachal Pradesh	23 to 29.09.2013	97196	25717	0	0	0	0	0	0	0	0	0	2
3	Assam	April'13 to March'14	1566033	1253357	44	17	61	9	2	11	4	0	4	51
4	Bihar		0	0	0	0	0	0	0	0	0	0	0	0
5	Chhattisgarh		0	0	0	0	0	0	0	0	0	0	0	0
6	Goa	1 to 15.02.2014	446896	68333	0	0	0	0	0	0	0	0	0	11
7	Gujarat	10 to 20.06.2013	13138453	10092433	1077	2395	3472	110	93	203	53	275	328	71
8	Haryana		0	0	0	0	0	0	0	0	0	0	0	0
9	Himachal Pradesh	2013-2014	545723	537969	0	4	4	0	0	0	0	0	0	30
10	Jharkhand	06.01.2013 to 21.12.2013	355104	203097	6	8	14	0	0	0	0	0	0	3
11	Jammu & Kashmir	15.3.2014 to 30.3.2014	267295	203130	2	0	2	0	1	1	0	0	0	2
12	Karnataka	2013-2014	7172804	5321019	191	286	477	21	12	33	14	42	56	89
13	Kerala	17.10.2013 to 13.01.2014	6423772	5218105	114	40	154	6	22	28	7	11	18	81
14	Madhya Pradesh	2013-14	10006872	6792873	152	133	285	42	12	54	1	8	9	74
15	Maharashtra	3.10.2013 to 14.10.2013	4672686	3891841	56	73	129	3	4	7	1	15	16	20
16	Manipur		0	0	0	0	0	0	0	0	0	0	0	0
17	Meghalaya	2013-14	179045	76731	0	0	0	0	0	0	0	0	0	0
18	Mizoram	Sept. to Dec.2013	374774	224400	4	12	16	0	0	0	0	0	0	3
19	Nagaland		0	0	0	0	0	0	0	0	0	0	0	0
20	Odisha	Nov.'13 to Jan.'14	11466361	10132653	1090	1602	2692	118	135	253	55	184	239	102
21	Punjab	2013-14	4019340	326716	38	14	52	28	3	31	0	1	1	42
22	Rajasthan	2013=14	1119729	347242	2	0	2	0	0	0	0	0	0	47
23	Sikkim	9.12.2013 to 24.01.2014	42667	37975	0	1	1	0	0	0	0	0	0	3

24	Tamil Nadu	April'13 to March'14	2550006	1798759	83	146	229	2	9	11	2	14	16	90
25	Tripura	2013-2014	0	0	0	0	0	0	0	0	0	0	0	0
26	Uttar Pradesh	2013-14	4343960	3251523	49	93	142	5	5	10	2	3	5	21
27	Uttarakhand	21to27.10.2013	185103	120055	8	14	22	0	1	1	1	2	3	1
28	West Bengal	2013-14	5161029	3986657	249	200	449	47	9	56	8	19	27	27
29	A & N Islands	7 days	37463	32093	1	10	11	0	0	0	0	0	0	1
30	Chandigarh	May"13toMarch14	80478	58225	2	5	7	0	0	0	0	0	0	4
31	D & N Haveli	13-22.01.2014	328662	257676	24	50	74	0	0	0	1	17	18	7
32	Daman & Diu	April'13 to March'14	31022	28517	0	0	0	0	0	0	0	0	0	2
33	Delhi		0	0	0	0	0	0	0	0	0	0	0	0
34	Lakshadweep	Nov-13	30999	29469	3	10	13	0	0	0	2	1	3	4
35	Puducherry		0	0	0	0	0	0	0	0	0	0	0	0
Total			75240107	54817472	3230	5168	8398	395	311	706	151	596	747	886